

CLASSIFIEDS

HIRING SHIFT MANAGER

Shift Manager position open at 24/7 Travel Store in Colby, Kansas
Successful Shift Managers make \$20.80-\$21.80 per hour plus benefits.
• Low Cost BCBS Insurance
• 401(k) Match and Potential Profit Sharing
• PTO
• Shift differential-\$2/hr
• Discretionary yearly bonus program

APPLY ONLINE AT:
24-7stores.com/careers



CASHIERS NEEDED

Cashier positions now open at 24/7 Travel Store in Colby, Kansas

Successful cashiers make \$16.20-\$18.60 per hour plus benefits.
• Low Cost BCBS Insurance
• 401(k) Match and Potential Profit Sharing
• PTO
• Shift differential-\$2/hr

APPLY ONLINE AT:
24-7stores.com/careers



LAND FOR SALE

**1,943.7± Total Acres | Cheyenne County, CO
CHEYENNE 57 FARM**

Located 28± miles south & 13± miles east of Burlington, CO near the Colorado/Kansas border.

- 1,113.7± pivot irrigated acres via 8 pivots
- 830.0± acres pasture & roads
- 5 irrigation wells via pipeline
- 3 grain bins & domestic well
- 2025 possession available
- 13± mi east & 5± mi north of Cheyenne Wells, CO
- FSA Base: 1,066.7 ac corn @ 174 bu PLC yield
- Legal: All of Sec 2, 10, & 11, T13S, R42W

Reduced Price \$3,700,000



For Further Information:
Marc Reck, Broker
Ben Gardiner, Broker Assoc.

970-522-7770 or 1-800-748-2589 | reckagri.com

Scan for more info



•PUBLIC NOTICE•

Published in The Colby Free Press on Friday, May 30, 2025

NOTICE OF HEARING ON AMENDING THE 2024-25 BUDGET

The governing body of Unified School District 315 will meet on the 23rd day of June, 2025 at 6:50 PM, at 600 W 3rd St, Colby, KS, 67701 for the purpose of hearing and answering objections of taxpayers relating to the proposed amended use of funds. Detailed budget information is available at USD 315 Administration Building and will be available at this hearing.

| SUMMARY OF AMENDMENTS | | | | |
|--------------------------|---------------------------|-------------------------------|-----------------------------|---|
| Fund | Adopted Budget 2024-25 | | Expenditures & Transfers | Proposed Amendment 2024-25 Budget Expenditures & Transfers |
| | Actual Tax Rate | Amount of Tax to be Levied | | |
| Bilingual | | | 141,370 | 291,370 |
| Professional Development | | | 134,293 | 184,293 |
| | | | | |
| | | | | |
| | | | | |
| | | | | |
| | | | | |
| | | | | |

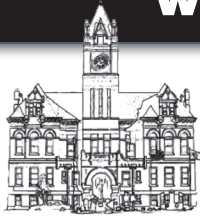
Amanda Carney
Board Clerk

 *Your Local*
NEWSPAPER
Subscribe Today!

**Sit back,
relax, and
read your
favorite
newspaper
online!**



**Subscribe online at:
www.nwkansas.com**



**COLBY
FREE PRESS**

The Colby Free Press

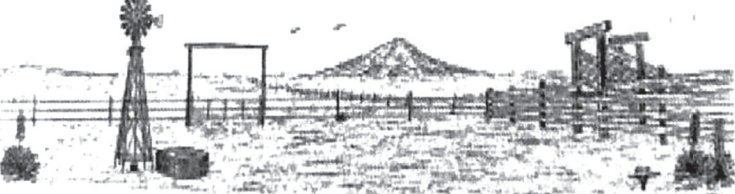
Business Directory

We have the right size ad for your business' budget.

Don't miss out on the opportunity to get your name in front of thousands of people!

PONCE FENCE COMPANY

Farm Fencing and Corrals



P.O. Box 44 (785) 538-2232
McDonald, KS 67745 Cell: (785) 332-6395



WATKINS REALTY AND INS.AGENCY, LLC

"Your Crop Insurance Headquarters"

Steven A. Watkins, MBA – Crop Insurance Specialist

901 Trail Ave • P.O. Box 840 • Hoxie, KS 67740
Toll Free: 1-800-232-3239 • Office: 785-675-3239
Cell: 785-675-1017 • Night and Weekends
watkinscroptax@yahoo.com
www.watkinscropinsurance.com



L+C Home Health Agency, Inc.

Where
Love
and Care
come
first

Medicare Certified • State Licensed

Serving Northwest Kansas since 2001!
Now hiring Part-time PTA.



1105 Taylor Ave., Colby, KS 67701
Phone: (785) 465-7444 • Email: lchha@st-tel.net
Find us online at: landhomehealthagencyinc.com

H HOLLAND PAVING

Residential, Industrial and Commercial Paving

We Specialize In:

- Paving •Asphalt Patching •Asphalt Overlay
- Chip Sealing •Crack Filling •New Concrete
- Concrete Repair •Seal Coating •Striping

Local References
Available Upon Request!

George Holland -
Owner/Operator
316-648-8037 (Cell)
316-722-7114 (Office)
Toll Free: 800-536-6143
www.hollandpaving.net
1255 S. Tyler
Wichita, KS 67209



CONSTRUCTION, LLC.

- Stucco
 - Stone
 - Concrete
 - Tile
 - Painting
 - AND MORE
- Luis Cortes**
(785) 462-5333
Kimberly Cortes
(785) 462-5134

Your ad could be here!
Call The Colby Free Press today to find
out how The Business Directory does
the hard work for you!

(785) 462-3963

LAKESIDE SAND & GRAVEL LLC

-Trenton, NE -
Sand • Gravel • Rock
• Recycled Asphalt
• Crushed Concrete
PO Box 545, Trenton, NE

(308) 340-9484

WE HAVE AN ACCOUNT FOR YOU!

**ELITE Cash
ELITE Saver**

- No monthly maintenance fees!
- No minimum balance to earn HIGH Interest!
- Get your paycheck sooner!

Bank from anywhere with online account opening & mobile deposit.
Visit our website www.fmbcolby.com

Interest rate is subject to qualifications.
Contact a customer service representative for more information.



**Farmers & Merchants
Bank of Colby**



NOW
OFFERING

Comparative Rating
Quote Multiple
Companies Faster!



Dennis Tubbs, Agent
dtubbs@kansasins.com

- Home & Auto
- Farm & Crop
- Business Insurance
- Boat, Motorcycle, RV
- Life Insurance

**Call today,
we're happy to
help with all your
insurance needs!**
785-462-3939

490 N. Franklin, Colby, KS • www.kansasins.com

Meadow Lake Restaurant & Lounge

• Open to the Public •

Saturday

Prime Rib Specials

Our kitchen is open

Tuesdays & Wednesday's 5-8 p.m.

Friday & Saturday 5-9 p.m.

 **MEADOW LAKE**
GOLF COURSE & RESTAURANT
785-460-6443
1085 E Golf Club Rd. • Colby, KS

