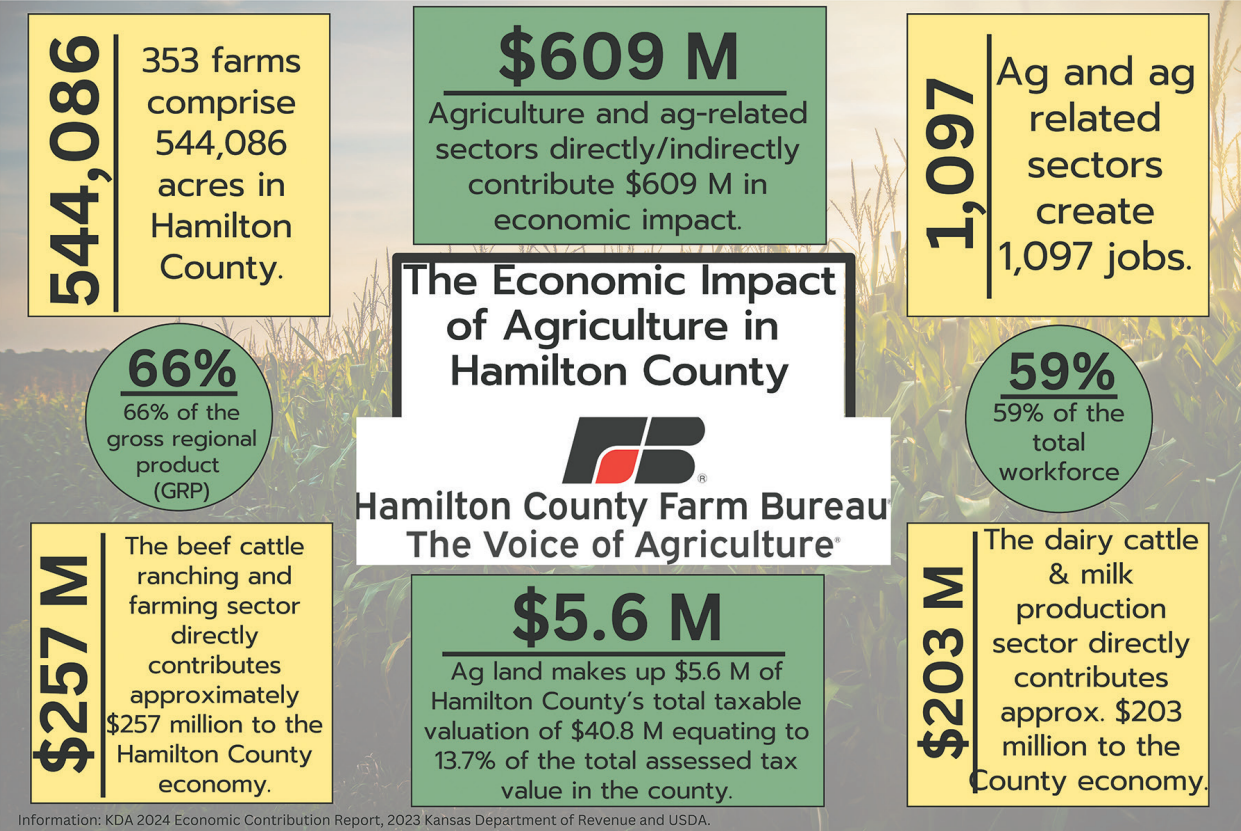


# NATIONAL AG WEEK IN HAMILTON COUNTY

by Krista Norton Reporter



There are 353 farms which comprise 544,086 acres in the county.

National Ag Week, the theme set by the Agriculture Council of America, celebrates the dedication of farmers and ranchers across Kansas and highlights the commitment of farmers and ranchers who work growing agriculture.

Agriculture, the science, art, or occupation concerned with cultivating land, raising crops, and feeding, breeding, and raising livestock; farming and the production of crops, livestock, or poultry.

Have you ever stopped to wonder what impact agriculture has on Hamilton County? The 2024 Kansas Department of Agriculture Economic Contribution Report and the 2023 Kansas Department of Revenue and USDA have some interesting statistics about Hamilton County.

There are 353 farms which comprise 544,086 acres in the county. Agriculture and ag-related sectors directly/indirectly contribute 609 million dollars in economic impact, creating 1,097 jobs.

The dairy cattle and milk production sector directly contributes approximately 203 million dollars to the county economy, while the beef cattle and farming sector directly contributes approximately 257 million dollars to the county's economy.

Agriculture land makes up \$5.6 million of Hamilton County's total taxable valuation of \$40.8 million equating to 13.7% of the total assessed tax value in the county.

## USDA (cont from Page 1)

notice of loss for prevented planted crops must submit an acreage report by the Aug. 15, 2025, deadline. Eligible producers can visit [fsa.usda.gov/ecap](https://fsa.usda.gov/ecap) for eligibility and payment details.

**Applying for ECAP**

Producers must submit ECAP applications to their local FSA county office by Aug. 15, 2025. Only one application is required for all ECAP eligible commodities nationwide. ECAP applications can be submitted to FSA in-person, electronically using Box and One-Span, by fax or by applying online at [fsa.usda.gov/ecap](https://fsa.usda.gov/ecap) utilizing a secure login.gov account.

If not already on file for the 2024 crop year, producers must have the following forms on file with FSA:

- Form AD-2047, Customer Data Worksheet.
- Form CCC-901, Member Information for Legal Entities (if applicable).
- Form CCC-902, Farm Operating Plan for an individual or legal entity.
- Form CCC 943, 75 percent of Average Gross Income from Farming, Ranching, or Forestry Certification (if applicable).
- AD-1026, Highly Erodible Land Conservation (HELC) and Wetland Conservation (WC) Certification.
- SF-3881, Direct Deposit.

Except for the new CCC-943, most producers, especially those who have previously participated in FSA programs, likely have these forms on file. However, those who are uncertain and want to confirm the status of their forms or need to submit the new Form-943, can contact their local FSA county office.

If a producer does not receive a pre-filled ECAP application, and they planted or were prevented from planting ECAP eligible commodities in 2024, they should contact their local FSA office.

**ECAP Payments and Calculator**

ECAP payments will be issued as applications are approved. Initial ECAP payments will be factored by 85% to ensure that total program payments do not exceed available funding. If additional funds remain, FSA may issue a second payment.

ECAP assistance will be calculated using a flat payment rate for the eligible commodity multiplied by the eligible reported acres. Payments are based on acreage and not production. For acres reported as prevented plant, ECAP assistance will be calculated at 50%.

For ECAP payment estimates, producers are encouraged to visit [fsa.usda.gov/ecap](https://fsa.usda.gov/ecap) to use the ECAP online calculator.

**More Information**

To learn more about FSA programs, producers can contact their local USDA Service Center. Producers can also prepare maps for acreage reporting as well as manage farm loans and view other farm records data and customer information by logging into their [farmers.gov](https://farmers.gov) account. If you don't have an account, sign up today.

FSA helps America's farmers, ranchers and forest landowners invest in, improve, protect and expand their agricultural operations through the delivery of agricultural programs for all Americans. FSA implements agricultural policy, administers credit and loan programs, and manages conservation, commodity, disaster recovery and marketing programs through a national network of state and county offices and locally elected county committees. For more information, visit [fsa.usda.gov](https://fsa.usda.gov).

## Public Notice



## GENERAL NOTICE TO CONTROL NOXIOUS WEEDS

The Kansas Noxious Weed Law K.S.A. 2-1314 et seq requires all persons who own or supervise land in Kansas to control and eradicate all weeds declared noxious by legislative action. The weeds declared noxious are: field bindweed, musk thistle, Johnsongrass, bur ragweed, Canada thistle, sericea lespedeza, leafy spurge, hoary cress, quackgrass, Russian knapweed, kudzu and pignut.

Notice is hereby given pursuant to the Kansas Noxious Weed Law to every person who owns or supervises land in **Hamilton** County that noxious weeds growing or found on such land shall be controlled and eradicated. Control is defined as preventing the production of viable seed and the vegetative spread of the plant.

Failure to observe this notice may result in the County:

- Serving a legal notice requiring control of the noxious weeds within a minimum of five days. Failure to control the noxious weeds within the time period allowed may result in the county treating the noxious weeds at the landowners expense and placing a lien on the property if the bill is not paid within 30 days or,
- Filing criminal charges for non-compliance. Conviction for non-compliance may result in a fine of \$100 per day of non-compliance with a maximum fine of \$1,500.

The public is also hereby notified that it is a violation of the Kansas Noxious Weed Law to barter, sell or give away infested nursery stock or livestock feed unless the feed is fed on the farm where grown or sold to a commercial processor that will destroy the viability of the noxious weed seed. Custom harvesting machines must be labeled with a label provided by the Kansas Department of Agriculture and must be free of all weed seed and litter when entering the State and when leaving a field infested with noxious weeds. Additional information may be obtained from the **Hamilton** County Noxious Weed Department or by contacting the Kansas Department of Agriculture, 109 S.W. 9th St., Topeka, KS 66612.

### Private Auction

**STANTON COUNTY, KANSAS**  
**768** Acres Irrigated  
Southeast of Johnson  
Call to bid by March 25th

**GRAY COUNTY, KANSAS**  
**320** Acres CRP & Farmland  
Just south of Montezuma  
Call to bid by April 1st

**GRANT COUNTY, KANSAS**  
**320** Acres  
Excellent Irrigated Farmland  
Call to bid by April 8th

**HAMILTON COUNTY, KANSAS**  
**480** Acres Expired CRP + Great Hunting  
Call to bid by April 22nd

**FINNEY COUNTY, KANSAS**  
**160** Acres Irrigated Farmland  
Call to bid by April 22nd

**FOR SALE**  
**STEVENS COUNTY, KANSAS**  
**1,520** Acres Irrigated  
with 3 Big Wells - \$2,400/Acre

**SEWARD COUNTY, KANSAS**  
**+/- 110** Acres  
Dryland Farmland  
\$1,650/Acre

*Call today to bid by phone!*

**620-356-5808**  
**Kansas Colorado Oklahoma**  
**faulknerrealestate.com**

## HAMILTON COUNTY FAMILY PRACTICE CLINIC

Se Habla Espanol  
**FLU VACCINES AVAILABLE!**

**SAME DAY APPOINTMENTS AVAILABLE**  
**Family Medicine**

Clinic Hours Mon - Fri  
**8 AM -12 PM AND 1 PM - 5 PM**

**Well Child & Women Exams**  
**Annual Physicals & Immunizations**  
**Workers Compensation**  
**Services Offered In-House**

**X-Ray CT & MRI**  
**Ultrasound \* Physical Therapy**  
**Laboratory Testing**

Cameron Jackson PT DPT

Brandee English PA-C

700 N Huser St., Syracuse, KS  
Call for An Appointment  
(620) 384-7350

## Golden Plains Insurance

INSURANCE  
Prepared. For Your Future

**Your Multi-Peril Crop & Farm and Ranch Insurance Specialists**

**We Also Do**

Crop-Hail • Homeowners • Commercial • Bonds  
Boat • Event • Specialty Types • Trucks & Trailers

Serving You In:  
**AZ, CA, CO, KS, MT, ND, NE, NM, OK, OR, SD, TX, & WY**

**Lamar • Rocky Ford**  
**Springfield • Walsh**  
**CALL 719.336.8292 TODAY**

**Home Grown and Independent Just Like You**

**GOLDENPLAINSINSURANCE.COM**